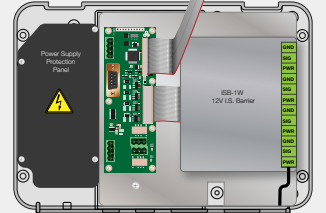
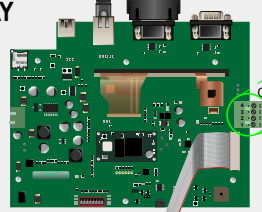
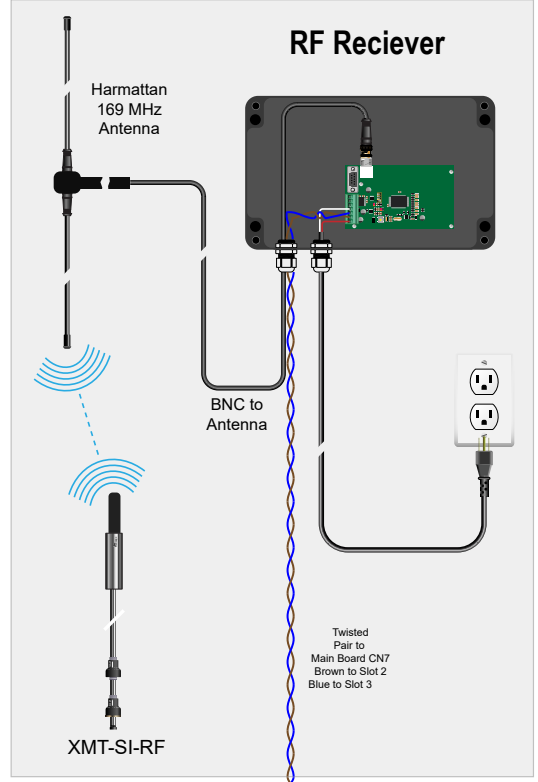
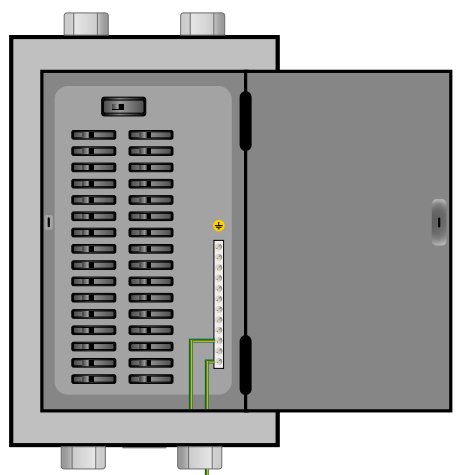


LX PLUS DISPLAY BOARD PANEL



AUXILIARY BOARD



Click on a gray shaded area to see an enlarged image.

Click the button below to go back to the original view.

BACK

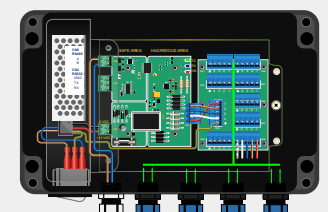
NOTE: This functionality only works in Acrobat Reader

Note 1: All DFS equipment should be on the SAME phase!

Note 2: Use 4 mm² (12 AWG) copper for I.S GND
2.5 mm² (14 AWG) copper can be used for non I.S Ground.

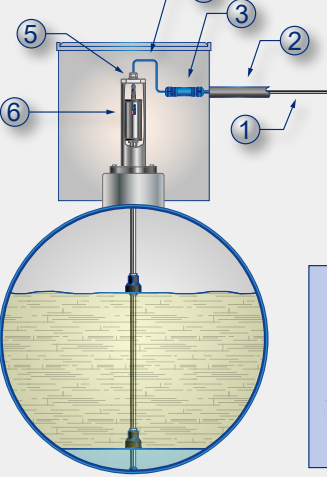
Note : COM1 & COM2 are configured as DCE.

MagDirect BRA-SI Active Barrier

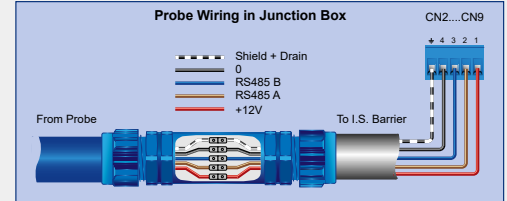


- CN1 Barrier Connection**
- 1 - +12 Vdc (Red)
 - 2 - RS485 A (Brown)
 - 3 - RS485 B (Blue)
 - 4 - -0 Vdc (White)
 - ↓ GND (Shield - optional)
- CN2 - CN9 Probe Connection**
- 1 - Power Supply to sensors (Red or Black)
 - 2 - RS485 A (Brown)
 - 3 - RS485 B (Blue)
 - 4 - GND (White)
 - ↓ GND (Shield - optional)
- Safe Area**
- CN1 Output RS485**
- 1 - Channel B (Blue)
 - 2 - Channel A (Brown)
- RS232 to system**
- 1 - RX on pin 3 RS DB9
 - 2 - TX on pin 2 RS DB9
 - 3 - GND on pin 5 RS DB9
- DB9 Female Connector**
- CN1 Power Supply**
- 1 - +12V dc
 - 2 - 0V
- Hazardous Area**
- CN4 Probe Connection**
- 1 - RS485 A (Brown)
 - 2 - RS485 B (Blue)
 - 3 - -0 Vdc (White)
 - 4 - +12 Vdc (Red)

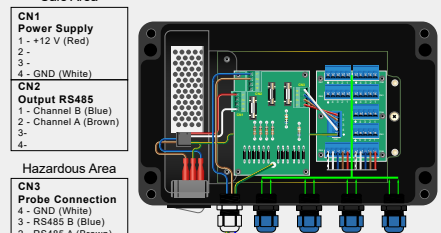
Twisted pair to Display Board CN7
Brown to Slot 2, Blue to slot 3



- Legend:
- Field cable LIYstCYY 2x0.25mm² + 2x1.0mm²
ProGauge P/N 864V/S14-911
 - Conduit rigid steel or PVC. Seal at both ends.
 - Junction box IP68 (ProGauge P/N JB-SI)
Use epoxy gel to seal the wire connections.
 - Probe cable
 - Riser cap with cable gland
 - Riser 2" sch.40 (min I.D 52 mm)
- Up to 8 probes can be connected on 1 MagDirect box.

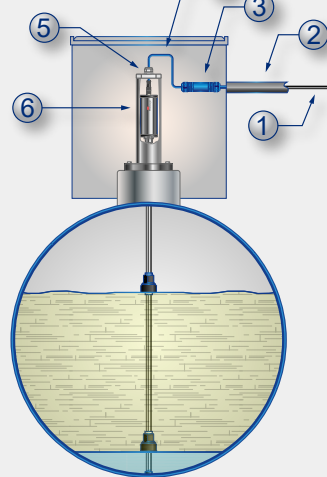


MagDirect BRA-SIP Passive Barrier



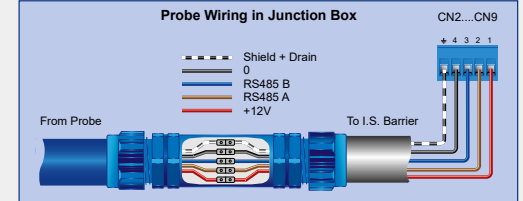
- CN1 Barrier Connection**
- 1 - +12 Vdc (Red)
 - 2 - RS485 A (Brown)
 - 3 - RS485 B (Blue)
 - 4 - -0 Vdc (White)
 - ↓ GND
- CN2 - CN9 Probe Connection**
- 1 - Power Supply to sensors (Red or Black)
 - 2 - RS485 A (Brown)
 - 3 - RS485 B (Blue)
 - 4 - GND (White)
 - ↓ GND (Shield - optional)
- Safe Area**
- CN1 Power Supply**
- 1 - +12 V (Red)
 - 2 -
 - 3 -
 - 4 - GND (White)
- Hazardous Area**
- CN3 Probe Connection**
- 4 - GND (White)
 - 3 - RS485 B (Blue)
 - 2 - RS485 A (Brown)
 - 1 - +12 V (Red)

Twisted pair to Display Board CN7
Brown to Slot 2, Blue to slot 3



- Note for I.S Ground:**
- » Use a separate ground wire 2.5mm² minimum for I.S. Ground
 - » Ensure that the I.S GND is on the same earth terminal as the PSU GND.
 - » Resistance between console ground and power panel should be less than 1 Ohm.

- Legend:
- Field cable LIYstCYY 2x0.25mm² + 2x1.0mm²
ProGauge P/N 864V/S14-911
 - Conduit rigid steel or PVC. Seal at both ends.
 - Junction box IP68 (ProGauge P/N JB-SI)
Use epoxy gel to seal the wire connections.
 - Probe cable
 - Riser cap with cable gland
 - Riser 2" sch.40 (min I.D 52 mm)
- Up to 8 probes can be connected on 1 MagDirect-P box.



FMM2058-PG
MagLink LX Plus
Wiring with ProGauge_r0

